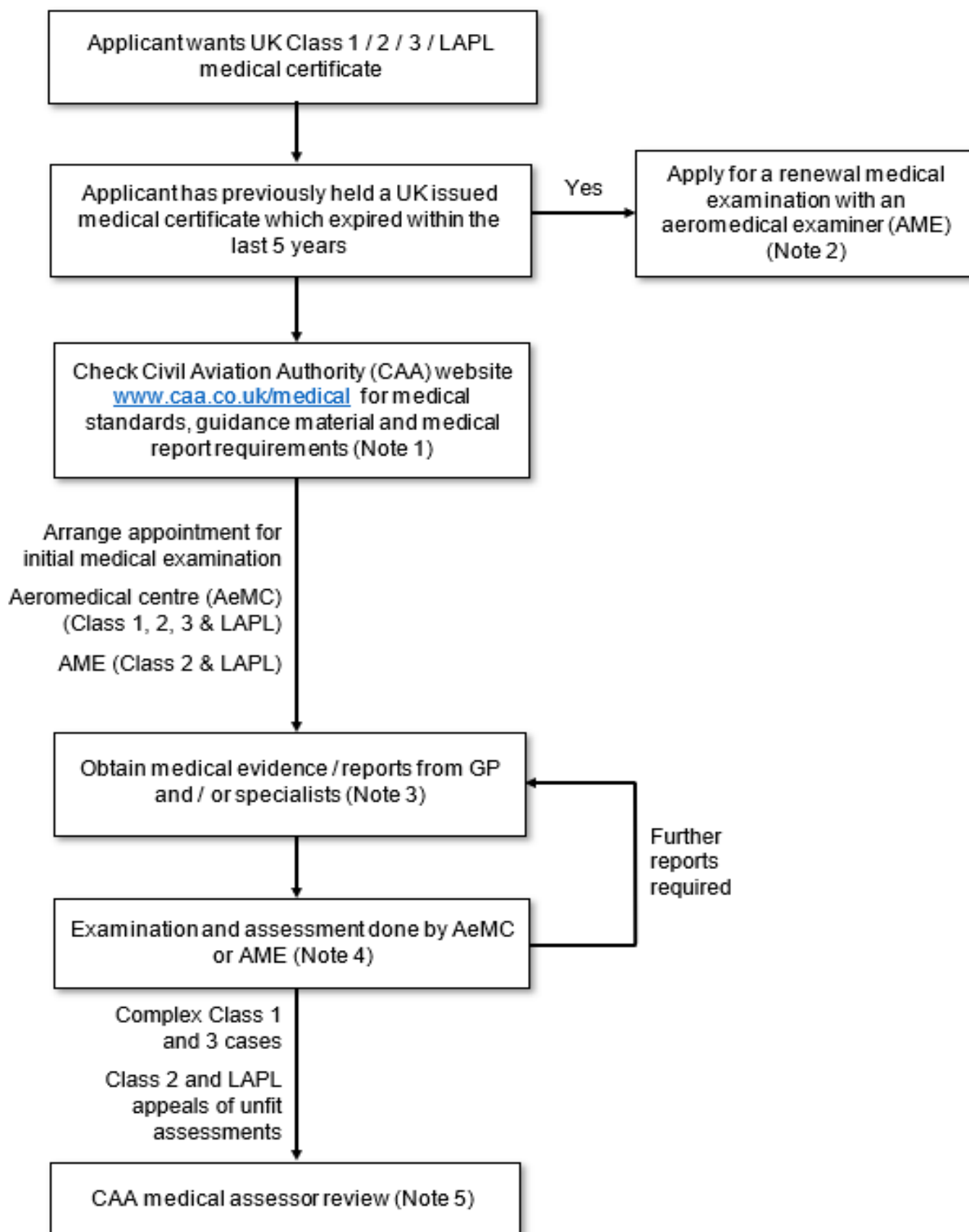


# Guidance for Applicants for UK Initial Medical Certificates



This flow chart demonstrates the application process for applicants who wish to apply for an initial UK medical certificate.

## Notes

### Note 1

Select "guidance material (GM)" under the heading of "Professional pilots" or "General aviation". The requirements for a Class 3 certificate can be found by selecting "new applicants" under the heading "Air traffic control". The format and content for medical reports required for various conditions can also be found at [Medical requirements for certification](#) by selecting "documents for download" and then scrolling through the various links under the heading "Flow charts / additional guidance by system".

### Note 2

For those who have previously held a UK issued medical certificate, assessment shall be based on revalidation requirements. Further information on renewing a medical certificate can be found at [Revalidate or renew a medical certificate](#).

### Note 3

You are advised to take copies of medical reports / records to your initial medical as this will allow more efficient assessment at the time of the medical. For UK applicants reports from specialists and health care professionals relating to past conditions are usually obtainable from UK GPs. Overseas applicants should obtain reports from medical records or from all doctors consulted for significant health conditions. If an applicant has held a licence or medical from a 3rd country, the forms and reports from the medical assessments undertaken by other States' aeromedical examiners (AMEs) and medical assessors can be helpful.

### Note 4

Where medical history is declared that may be relevant to flight safety, medical reports and / or copies of records will normally be required (Note 3) for review. AMEs may discuss borderline or complex cases with a Civil Aviation Authority (CAA) medical assessor. Further report(s) and / or tests may be required.

### Note 5

This applies to complex cases (Class 1 and 3), where referral to the CAA is mandatory, or where a Class 2 or LAPL applicant wishes to formally appeal an unfit assessment.

Please print this document and take to your AME or specialist advisor.